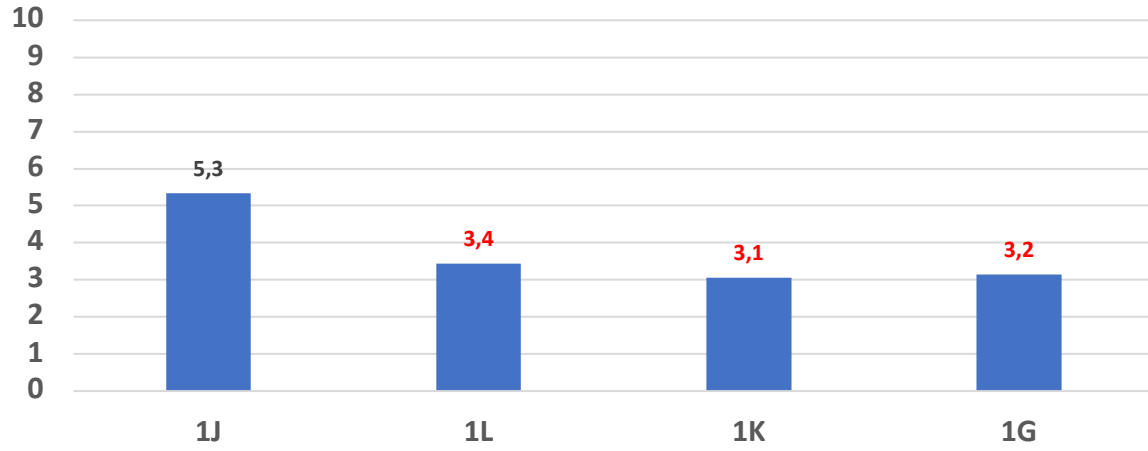


# TEST di INGRESSO di ITALIANO

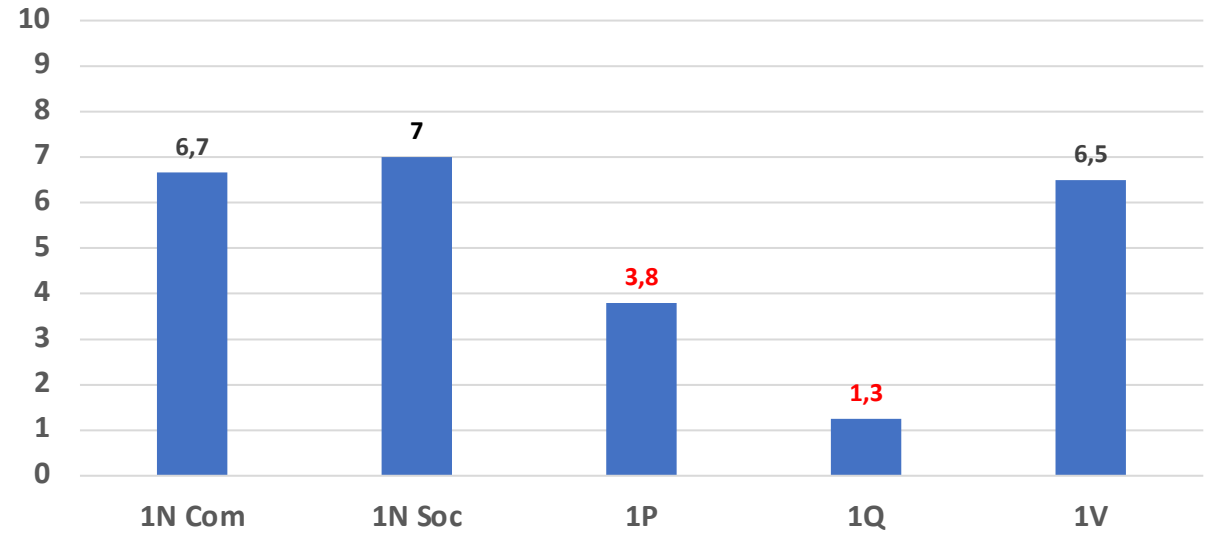
## Polo ospitalità

Media per classe



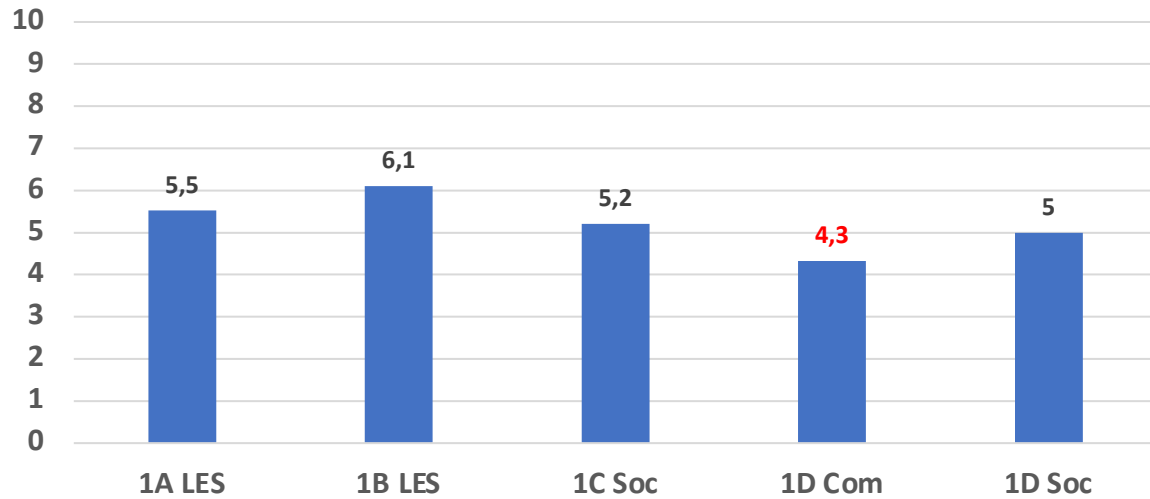
## IdA

Media per classe



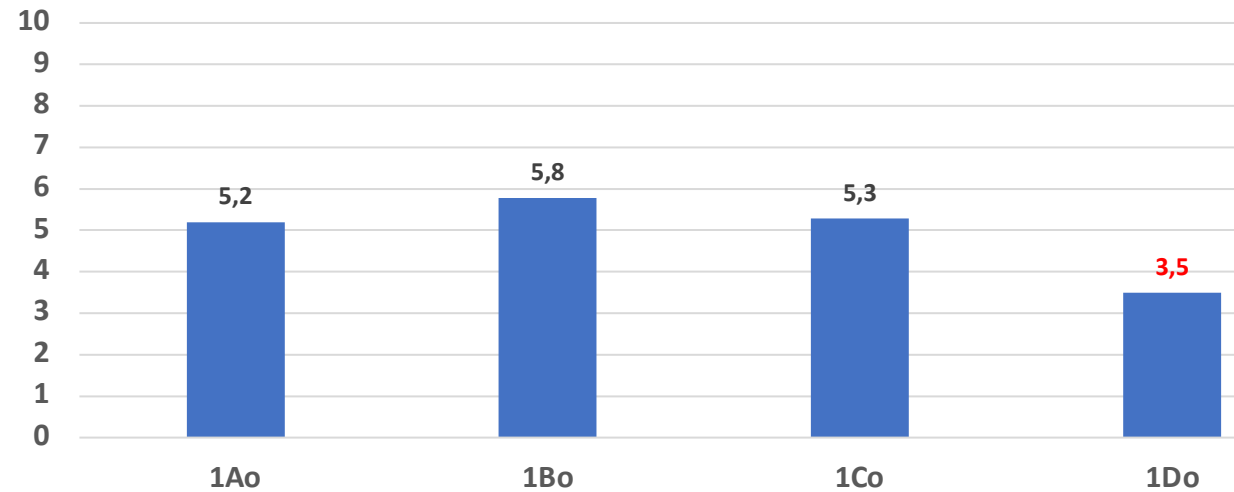
## Polo economico e sociale

Media per classe



## Olmo

Media per classe



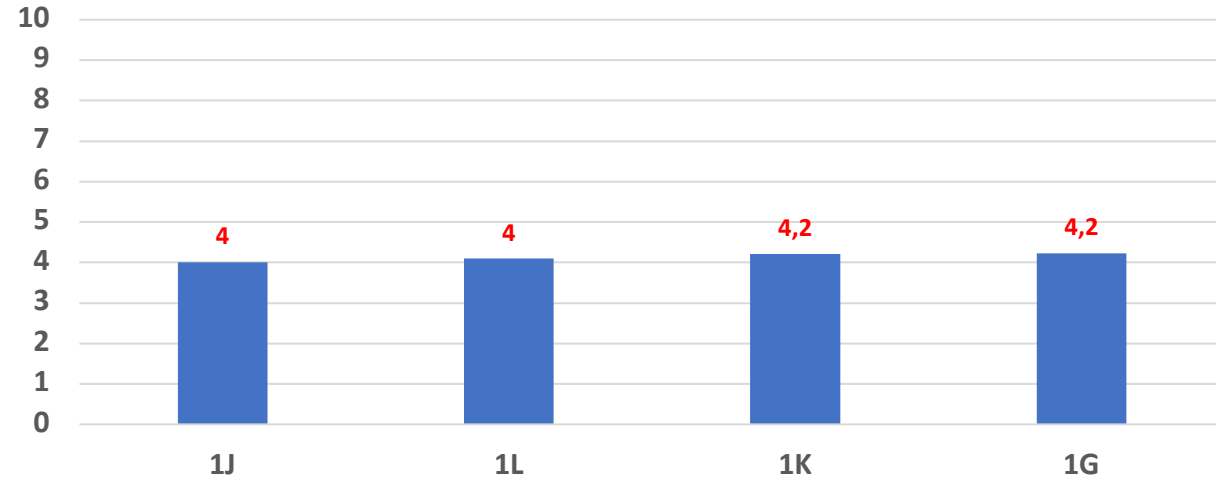
# ITALIANO

ITALIANO	POLO OSPITALITA'				POLO ECONOM E SOC					OLMO				IdA				
GIUDIZIO	1G	1J	1K	1L	1A	1B	1C soc	1D soc	1D com	1Ao	1Bo	1Co	1Do	1Ns	1Nc	1P	1Q*	1V
GRAVEMENTE INSUFFICIENTE	13	2	14	6	4	2	7	4	3	7	3	8	21	0	1	3	8	0
INSUFFICIENTE	0	1	1	0	4	1	2	4	2	5	5	4	1	1	0	1	0	1
SUFFICIENTE	0	1	1	1	3	3	3	5	0	6	8	3	0	0	1	1	0	0
DISCRETO	0	0	0	0	1	2	0	0	0	1	5	3	0	0	2	0	0	0
BUONO	0	0	0	0	3	2	2	0	1	2	2	2	0	2	2	0	0	1
OTTIMO	0	0	0	0	0	0	1	0	0	0	0	1	0	0	0	0	0	0
TOTALE ALUNNI (CHE HANNO SVOLTO LA PROVA)	13/21	4/12	16/19	7/14	15/18	10/18	15/19	13/15	6/6	21/22	23/23	21/22	22/22	3/7	6/10	5/9	8/12	2/7
TOTALE ALUNNI CON VOTO ≥ 6	0	1	1	1	7	7	6	5	1	9	15	9	0	2	5	1	0	1
PERCENTUALE ALUNNI CON VOTO ≥ 6	0%	25%	6%	14%	47%	70%	40%	38%	17%	43%	65%	43%	0%	33%	83%	20%	0%	50%

## Polo ospitalità

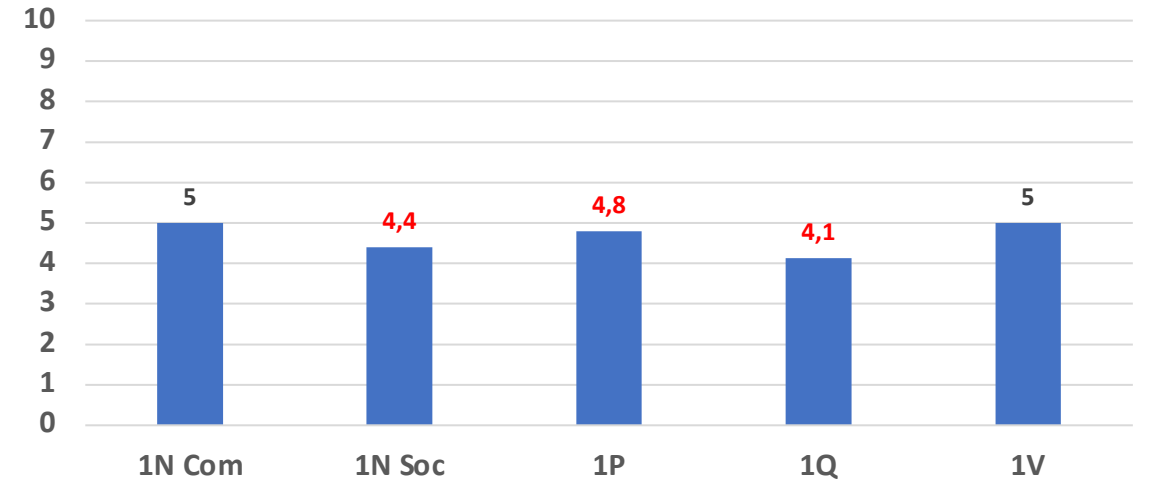
Media per classe

# TEST di INGRESSO di MATEMATICA



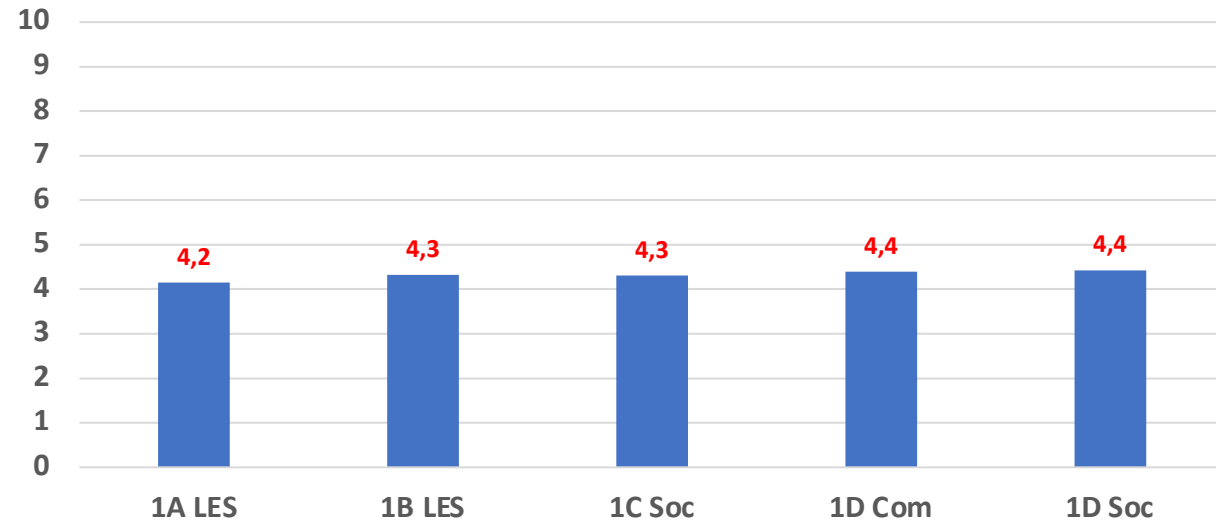
## IdA

Media per classe



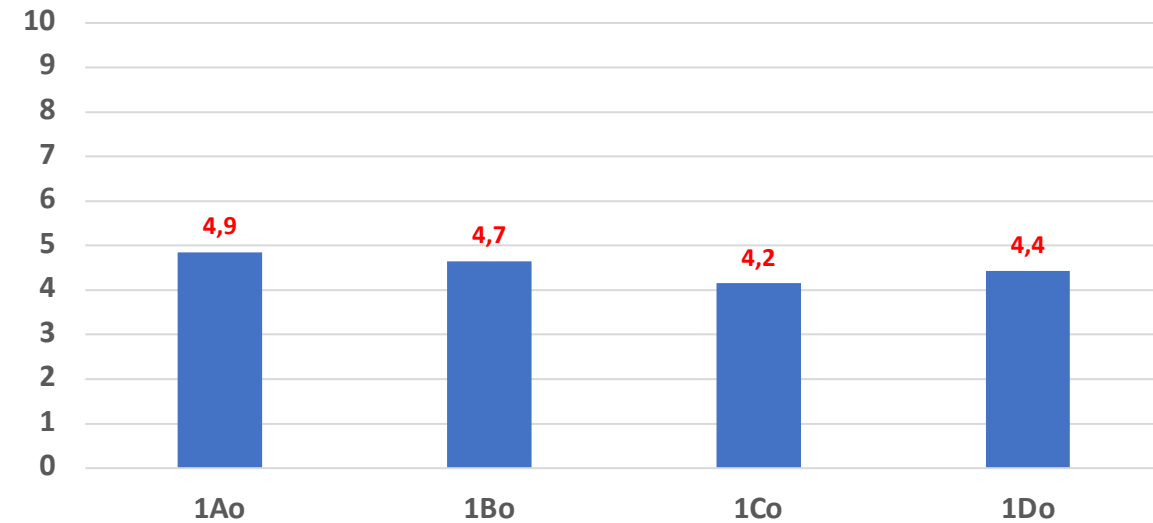
## Polo economico e sociale

Media per classe



## Olmo

Media per classe



# MATEMATICA

MATEMATICA	POLO OSPITALITA'				POLO ECONOM E SOC					OLMO				IdA				
GIUDIZIO	1G	1J	1K	1L	1A	1B	1C soc	1D soc	1D com	1Ao	1Bo	1Co	1Do	1Ns	1Nc	1P	1Q	1V
GRAVEMENTE INSUFFICIENTE	11	4	12	9	11	10	13	7	3	7	12	17	15	3	1	2	7	2
INSUFFICIENTE	1	0	1	1	2	5	2	6	2	10	7	3	3	2	5	2	1	1
SUFFICIENTE	1	0	1	0	0	0	0	0	0	2	4	0	3	0	1	1	0	0
DISCRETO	0	0	0	0	0	0	1	0	0	1	0	0	0	0	0	0	0	1
BUONO	0	0	0	0	0	0	0	0	0	0	0	0	0	0	0	0	0	0
OTTIMO	0	0	0	0	0	0	0	0	0	0	0	0	0	0	0	0	0	0
TOTALE ALUNNI (CHE HANNO SVOLTO LA PROVA)	13/21	4/12	14/19	10/14	13/18	15/18	16/19	14/15	5/6	20/22	23/23	20/23	21/22	5/7	7/10	5/9	8/12	4/7
TOTALE ALUNNI CON VOTO ≥ 6	1	0	1	0	0	0	1	0	0	3	4	0	3	0	1	1	0	1
PERCENTUALE ALUNNI CON VOTO ≥ 6	7%	0%	7%	0%	0%	0%	6%	0%	0%	15%	17%	0%	21%	0%	14%	20%	0%	25%

- ✓ Numero elevato di GI in molte classi;
- ✓ Non risultano voti superiori al discreto

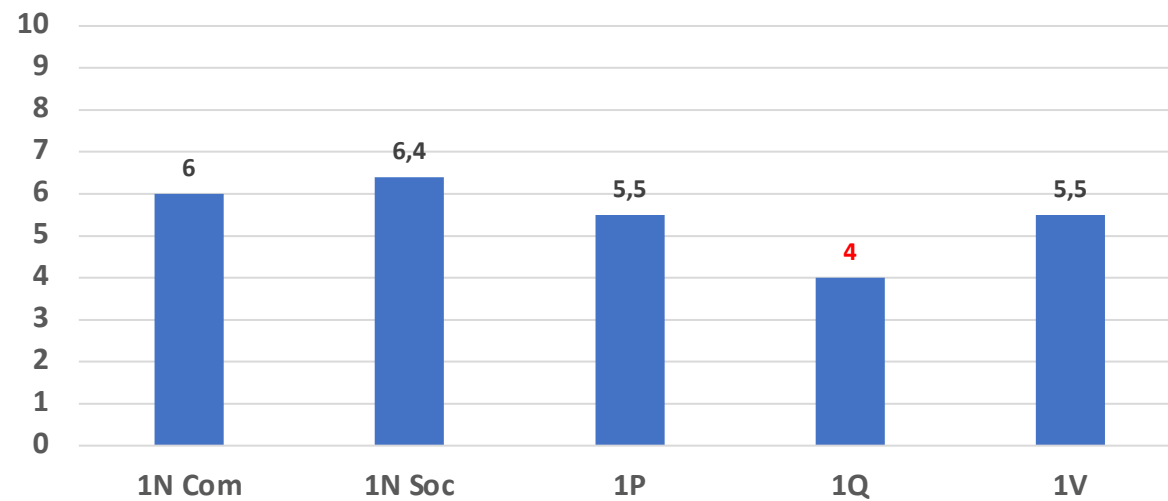
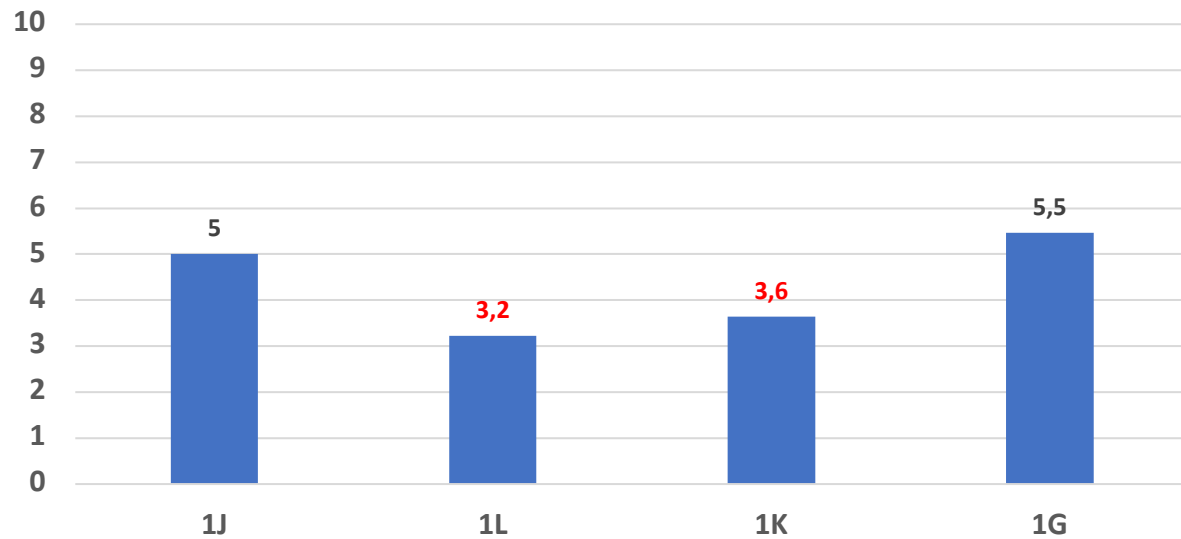
## Polo ospitalità

Media per classe

# TEST di INGRESSO di INGLESE

## IdA

Media per classe

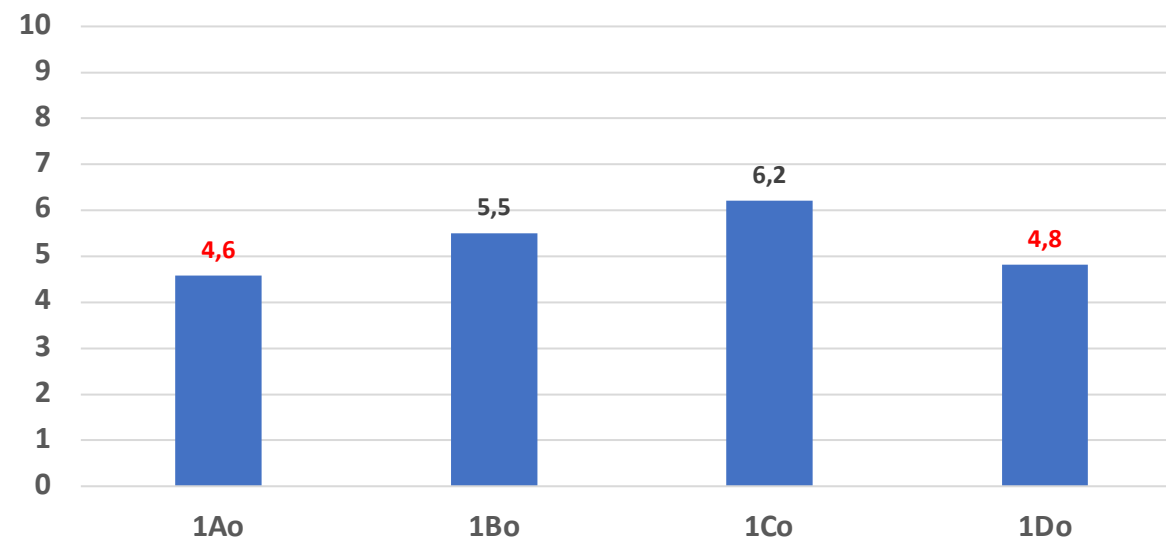
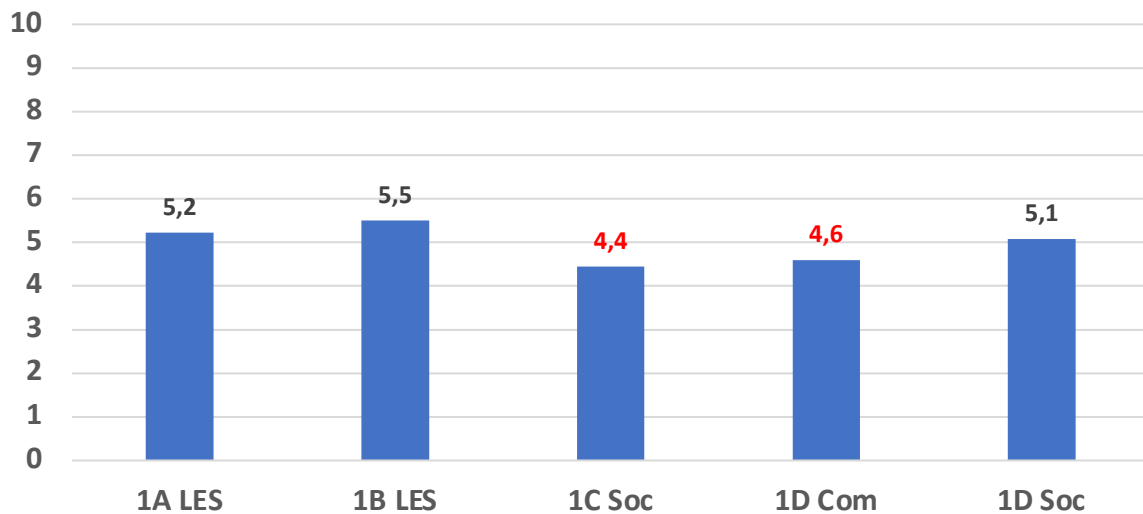


## Polo economico e sociale

Media per classe

## Olmo

Media per classe



# INGLESE

INGLESE	POLO OSPITALITA'				POLO ECONOM E SOC					OLMO				IdA				
GIUDIZIO	1G	1J	1K	1L	1A	1B	1C soc	1D soc	1D com	1Ao	1Bo	1Co	1Do	1Ns	1Nc	1P	1Q	1V
GRAVEMENTE INSUFFICIENTE	5	2	11	11	5	4	10	4	4	10	7	2	12	1	2	2	6	1
INSUFFICIENTE	1	0	1	0	1	5	1	5	0	5	4	5	4	1	2	1	0	0
SUFFICIENTE	7	0	1	1	4	1	2	1	0	3	3	3	1	1	0	2	1	1
DISCRETO	0	0	0	1	2	3	2	1	0	0	6	7	1	0	3	0	1	2
BUONO	2	0	1	0	1	0	1	1	0	1	2	1	2	1	0	0	0	0
OTTIMO	0	1	0	0	0	1	0	0	1	0	0	1	2	1	1	1	0	0
TOTALE ALUNNI (CHE HANNO SVOLTO LA PROVA)	15/21	3/12	14/19	13/14	13/18	14/18	16/19	12/15	5/6	19/22	22/23	19/22	22/22	5/7	8/10	6/9	8/12	4/7
TOTALE ALUNNI CON VOTO ≥ 6	9	1	2	2	7	5	5	3	1	4	11	12	6	3	4	3	2	3
PERCENTUALE ALUNNI CON VOTO ≥ 6	60%	33%	14%	15%	54%	36%	31%	25%	17%	21%	50%	63%	27%	60%	50%	50%	25%	75%